



## UNIFIED CYBER OLYMPIAD

**CLASS - 3**

**Question Paper Code : 30109**

### KEY

|       |       |       |       |       |       |       |       |       |       |
|-------|-------|-------|-------|-------|-------|-------|-------|-------|-------|
| 1. B  | 2. C  | 3. C  | 4. C  | 5. A  | 6. D  | 7. B  | 8. A  | 9. A  | 10. B |
| 11. D | 12. B | 13. A | 14. B | 15. B | 16. C | 17. B | 18. C | 19. D | 20. B |
| 21. A | 22. A | 23. A | 24. C | 25. D | 26. D | 27. D | 28. D | 29. C | 30. D |
| 31. D | 32. B | 33. A | 34. D | 35. B | 36. C | 37. A | 38. A | 39. C | 40. B |
| 41. A | 42. B | 43. D | 44. B | 45. B | 46. B | 47. A | 48. D | 49. B | 50. C |

### SOLUTIONS

#### MENTAL ABILITY

01. (B) (1) Range 1 to 10  
5 - five, 7 - seven  
(2) Range 11 to 20  
11 - Eleven, 12 - Twelve, 17 - seventeen  
(3) Range 50 to 59  
55 - fifty five, 57 - fifty seven  
(4) Range 90 to 99  
95 - ninety five, 97 - ninety seven
02. (C)  $50 \div 10 = 5$   
 $5 \times 1 = 5$

03. (C)  
(A)  $3651 \approx 4000$   
 $1021 \approx 1000$   
 $4000 - 1000 = 3000$   
(B)  $2154 \approx 2000$   
 $1894 \approx 2000$   
 $2000 - 2000 = 0$   
(C)  $5321 \approx 5000$   
 $3978 \approx 4000$   
 $5000 - 4000 = 1000$   
(D)  $3999 \approx 4000$   
 $1100 \approx 1000$   
 $4000 - 1000 = 3000$

04. (C) 10:50 clock

05. (A)  $\boxed{A} + \boxed{B} + \boxed{B} = 20 \text{ g}$

$\boxed{A} + \boxed{A} = 20 \text{ g}$

$\boxed{A} = 10 \text{ g}$

$\boxed{B} = \frac{10 \text{ g}}{2} = 5 \text{ g}$

06. (D)  $\frac{2}{5} + \frac{2}{5} + \frac{2}{5} = \frac{6}{5}$  (not equal to whole)

07. (B) Rs.  $10 \times 10 = \text{Rs. } 100$

08. (A) The  $1000 \text{ ml} - 500 \text{ ml} = 500 \text{ ml}$

09. (A) 
$$\begin{array}{r} 4\cancel{5}1\cancel{0}1\cancel{0}10 \\ - 3263 \\ \hline 17\boxed{3}7 \end{array}$$

Hence, the missing number is 3.

10. (B) Among the option 304 cm is the shortest length.

11. (D) A circle has zero corners, while a triangle has 3, a square rectangle has 4 & a cube has 8 corners.

12. (B)  $6 + 7 + 8 + 9 + 10 = 5 \times 8 = 40$

$7 + 8 + 9 + 10 + 11 = 5 \times 9 = 45$

$8 + 9 + 10 + 11 + 12 = 5 \times 10 = 50$

$15 + 16 + 17 + 18 + 19 = 5 \times 17 = 85$

13. (A) Distance between X and Y = 324 km  
Distance between Y and Z = 247 km  
Distance travelled by Raju =  $324 + 247 = 571 \text{ km}$

14. (B) Cube has 6 surfaces cuboid has 6 surfaces  $6 + 6 = 12$ .

15. (B) Each dog has 1 nose and 4 legs if teddy has 6 dogs

$6 \times 1 = 6$

$6 \times 4 = 24$

$24 - 6 = 18$

**REASONING**

16. (C) Options (A),(B) and (D) are used for cutting purpose. Option (C) spoon is used for eating.

17. (B) Options (A),(C) and (D) have equal number of sides and circles. Option (B) has 5 sides and 4 circles.

18. (C) 4 Groups of 2 Balls = 8 Balls. similar way 5 groups of 3 Birds = 15 Birds.



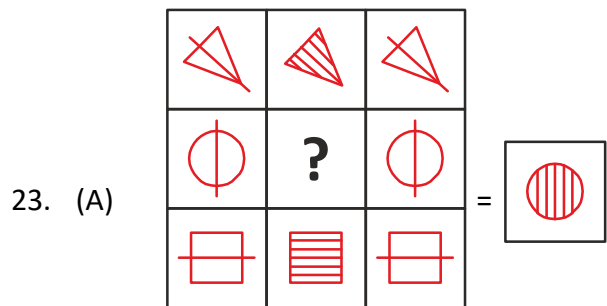
20. (B) The figures 1,2,3 and 4 are different and 1 is repeated in 5th place and 2 in the 6th place and so on. Hence, Option (B) comes next.

21. (A) B-z, R-e, A-n, I-r and N-c  
The code for BRAIN is zenrc.

22. (A)



D appears in resident but not in reinvest.



24. (C) Hence, the number of ovals in the given figure is 5.

25. (D) Given,

$$\begin{array}{|c|c|c|} \hline + & 11 & ? \\ \hline 2 & ? & 7 \\ \hline \end{array}$$

$2 + 11 = ?$


$2 + 11 = 13 \text{ and}$

$2 + ? = 7 \Rightarrow 2 + \underline{5} = 7$

$7 = 7 \text{ (True)}$

The required numbers are 13 and 5.

The number replaces 'P' is 5

26. (D) 
27. (D) A, E and L are 1<sup>st</sup>, 5<sup>th</sup> and 12<sup>th</sup> letters in the alphabetic order. U is not the 24<sup>th</sup> letter.
28. (D) Square, Rectangle Triangle and circle are 2 D shapes.  
Cube , Cuboid, Sphere, Cylinder and Cone are 3D shapes.
29. (C) The outer and the inner figures are different.
30. (D)  $H \xrightarrow{I} J \xrightarrow{K} L \xrightarrow{M} N \xrightarrow{O} P \xrightarrow{Q} R$

### COMPUTERS

31. (D)
- (A) Trackball : A trackball is an input device used to move a cursor on a computer screen. It does not capture biometric data.
- (B) Printer : A printer is an output device used to produce hard copies of documents or images. It does not capture biometric data.
- (C) RFID Reader: An RFID reader is a device used to read RFID tags for tracking purposes. It does not capture biometric data.
- (D) Face Recognition Camera: A face recognition camera is a biometric input device that captures and analyzes facial features for authentication and identification purposes.
32. (B) LCD (Liquid Crystal Display): LCD monitors use liquid crystal technology to display images. They are thin, lightweight, and energy-efficient compared to older CRT monitors. LCD monitors are commonly used in modern computers and televisions.  
CRT (Cathode Ray Tube): CRT monitors use a cathode ray tube to display images. They are bulkier and heavier than LCD monitors and have largely been replaced by LCD and other flat-panel display technologies. However, they were commonly used in older computers and televisions.
- DVD (Digital Versatile Disc): DVD is a type of optical disc used for storing and playing digital video and audio content. It is not a type of monitor.
- VCD (Video Compact Disc): VCD is another type of optical disc used for storing and playing video content. Like DVD, it is not a type of monitor.
33. (A) Address bar is a text field at the top of the web browser that displays the current webpages URL or web address.
34. (D) Microsoft Word is a popular word processing software developed by Microsoft Corporation. Options (A), (B), and (C) represent different editions or versions of MS Word that have been released over the years, including 2003, 2007, and 2010 respectively. However, option (D) MS Word 1020 is not a valid edition of MS Word. It is likely a typographical error or a fictitious version. Therefore, option (D) is the correct answer as it does not correspond to any known edition of MS Word.
35. (B) In MS-Paint, using pencil tool we can draw free hand figures.
36. (A) Within a C.P.U., arithmetic and logic unit is used for logical operations or comparisons such as less than, equal to or greater than.
37. (A) A laptop is a portable computer that is typically battery - powered, compact enough to rest on the user's lap, and equipped with a screen that can be closed over the keyboard like a lid. Laptops are designed for mobility and convenience, allowing users to carry their it in various locations.  
Options (B) Desktop computer, (C) Tablet and (D) Notebook are incorrect.  
Desktop computers are not portable and typically consists of separate components like a monitor, keyboard, and CPU housed in a desktop case.

Tablets are portable computing devices with touchscreen displays, but they do not have a physical keyboard that can be closed over the screen.

Notebooks are similar to laptops but are generally smaller and lighter. However, the term “notebook” is less commonly used to refer to this type of portable computer compared to “laptop.”

38. (A) Monitor: A monitor is an output device that displays visual information generated by the computer. While the monitor displays the results of the computer's operations, it does not give instructions to the computer. Its primary function is to present information to the user.
39. (C) Bill Gates co-founded Microsoft Corporation, a technology company known for its software products and services.
40. (B)
- (A) A device used for watching movies: This option is incorrect. While some gaming consoles can also stream movies, their primary purpose is for playing video games.
- (B) A device used for playing video games: This option is correct. Gaming consoles are dedicated devices designed specifically for playing video games.
- (C) A device used for listening to music: This option is incorrect. Gaming consoles are not primarily designed for listening to music, although some may have multimedia capabilities.
- (D) A device used for taking photos: This option is incorrect. Gaming consoles are not designed for taking photos.

41. (A) Google Maps is a mapping service that provides various features, including directions, satellite imagery, and location information, but it does not specifically display traffic conditions.
42. (B) !50?
43. (D) An operating system helps the computer run programs, manage files, and control how the computer works.
44. (B) Keyboard is main device used for typing letters.
45. (B) If Sravani deleted a file by mistake, she can find it in the Recycle Bin folder on her computer. The Recycle Bin is a special place where deleted files are kept until you remove them permanently. She can open the Recycle Bin, find her file and restore it to its original place.

### ENGLISH

46. (B)
47. (A)
48. (D)
49. (B)
50. (C)